

RESIDENCE N  
LINE 01

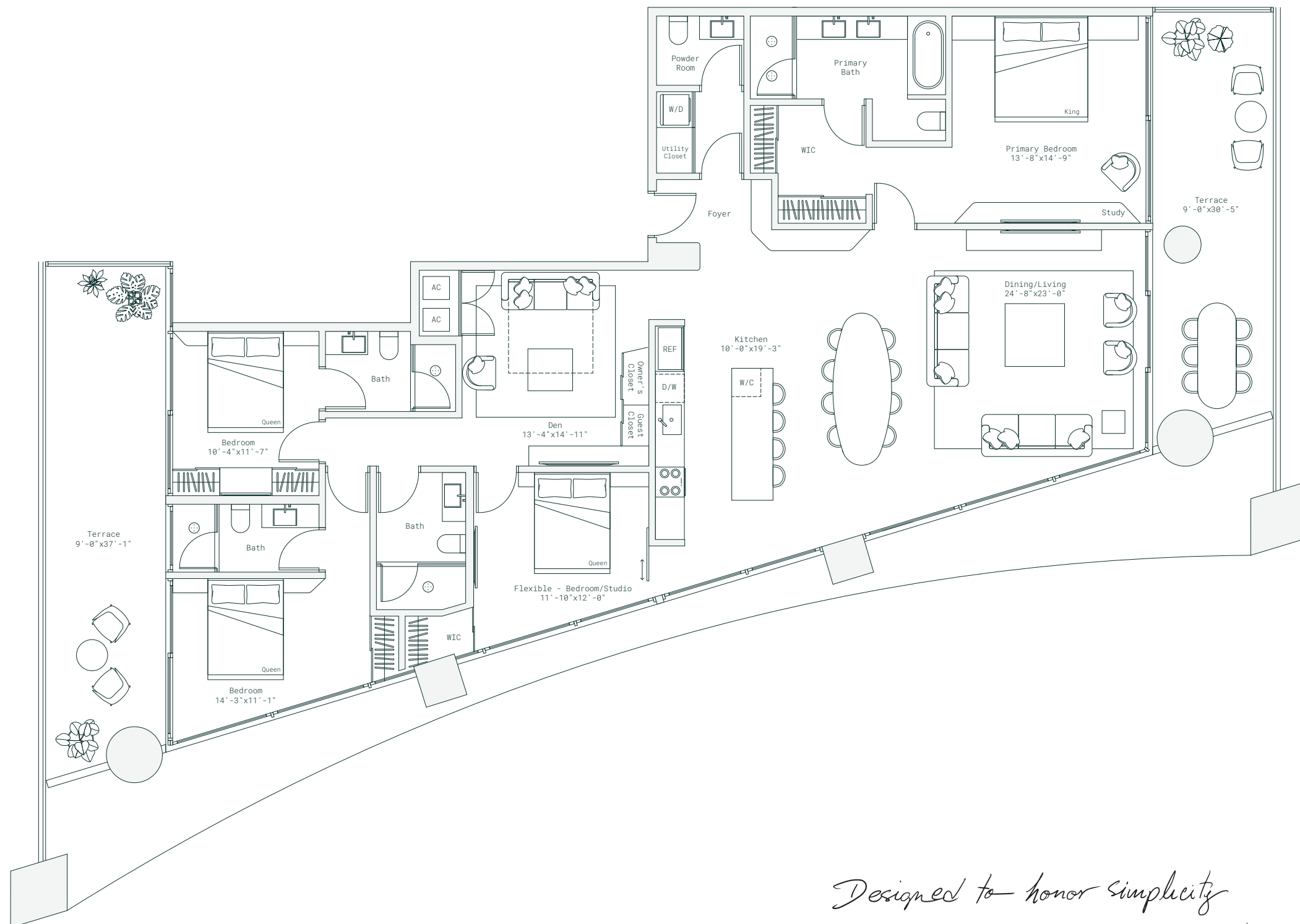
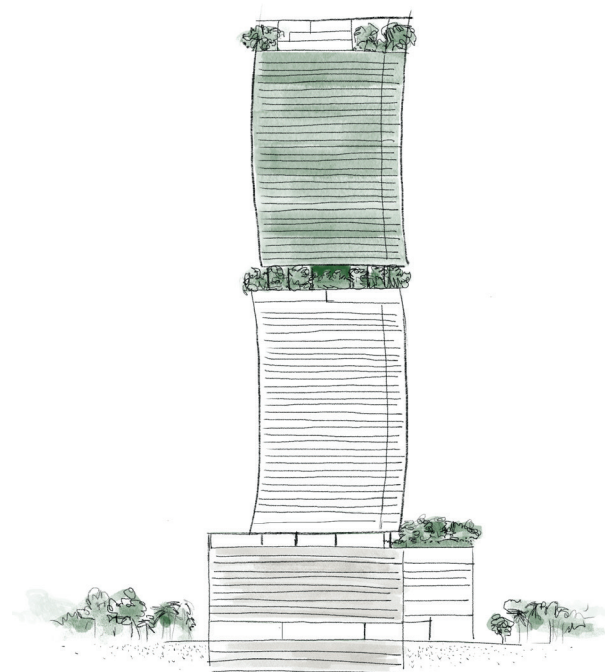
4 BED + DEN | 4.5 BATH  
INTERIOR 2,237 SF | 208 M<sup>2</sup>  
EXTERIOR 582 SF | 54 M<sup>2</sup>  
TOTAL 2,819 SF | 262 M<sup>2</sup>

ORA  
BY  
Casa♥Tua



Above Bosco

LEVELS 46-73



Designed to honor simplicity  
and deepen human connection

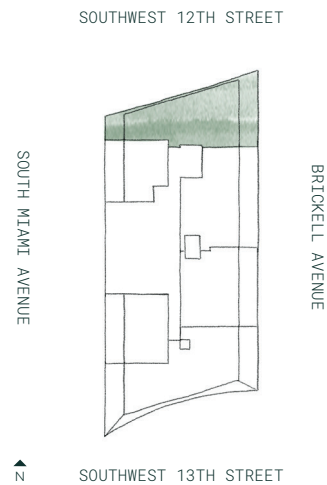
Developed By  
**FORTUNE**  
INTERNATIONAL  
GROUP



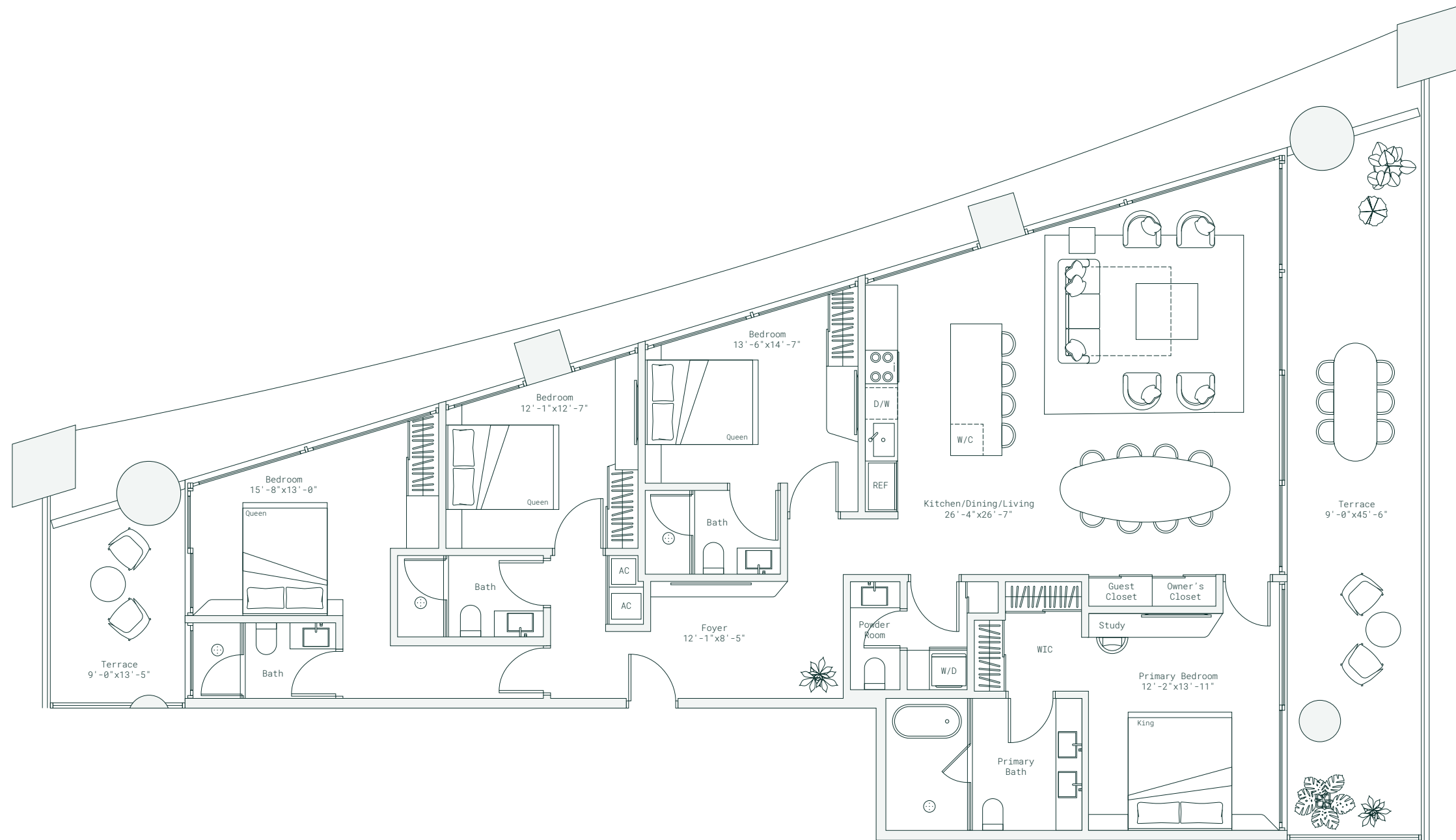
ORAL REPRESENTATIONS CANNOT BE RELIED UPON AS CORRECTLY STATING REPRESENTATIONS OF THE DEVELOPER. FOR CORRECT REPRESENTATIONS, MAKE REFERENCE TO THE DOCUMENTS THAT ARE REQUIRED BY SECTION 718.503, FLORIDA STATUTES, TO BE FURNISHED BY A DEVELOPER TO A BUYER OR LESSEE. THIS PROJECT IS BEING DEVELOPED BY 1210 BRICKELL OWNER LLC WHICH HAS THE RIGHT TO USE THE TRADEMARK NAMES AND LOGOS OF FORTUNE INTERNATIONAL GROUP. THIS PROJECT IS NOT OWNED, DESIGNED, DEVELOPED, OFFERED OR SOLD BY ORA BY CASA TUA LLC OR ITS AFFILIATES. 1210 BRICKELL OWNER, LLC, THE DEVELOPER OF THE PROJECT OR ITS AFFILIATES USES THE BRAND'S TRADEMARKS PURSUANT TO A LICENSE AGREEMENT WITH THE BRAND, WHICH MAY BE TERMINATED OR REVOKED ACCORDING TO ITS TERMS. THE BRAND HAS NOT CONFIRMED THE ACCURACY OF, AND IS NOT RESPONSIBLE FOR, ANY OF THE STATEMENTS OR REPRESENTATIONS MADE HEREIN. This is not intended to be an offer to sell, or solicitation to buy, condominium units to residents of any jurisdiction where prohibited by law, and your eligibility for purchase will depend upon your state of residency. The offering is made only by the prospectus for the condominium and no statement should be relied upon if not made in the prospectus. All depictions of appliances, counters, soffits, floor coverings, accessories, furniture, fixtures, and all other items of decoration are strictly for illustrative and display purposes only and is intended to act as an example to assist purchasers in visualizing a fully furnished unit. Such depictions should not be relied upon as a representation of the final product. All such items will not be included with the unit unless otherwise provided for in the purchase and sale documents and are subject to changes or substitution without notice. Stated interior square footage is measured to the exterior face of exterior walls and to the centerline of interior demising walls or to the exterior face of walls adjoining corridors or other common elements or shared facilities without excluding areas that may be occupied by columns or other structural components. This method of measurement varies from, and is larger than, the dimensions that would be determined by using the description and the definition of the Unit set forth in the Declaration (which generally only includes the interior airspace between the perimeter walls and excludes structural components). For reference, the area of the unit, determined in accordance with the unit boundaries set forth in the Declaration is set forth in Exhibit "3" to the Declaration. All dimensions are approximate and may vary with actual construction. THE COMPLETE OFFERING TERMS ARE IN A CPS-12 APPLICATION AVAILABLE FROM THE OFFEROR. FILE NO. CP24-0079

RESIDENCE R  
LINE 04

4 BED | 4.5 BATH  
INTERIOR 1,974 SF | 183 M<sup>2</sup>  
EXTERIOR 514 SF | 48 M<sup>2</sup>  
TOTAL 2,488 SF | 231 M<sup>2</sup>



*Above Bosco*  
LEVELS 47-73



*Designed to honor simplicity  
and deepen human connection*

Developed By  
**FORTUNE**  
INTERNATIONAL  
GROUP

ORAL REPRESENTATIONS CANNOT BE RELIED UPON AS CORRECTLY STATING REPRESENTATIONS OF THE DEVELOPER. FOR CORRECT REPRESENTATIONS, MAKE REFERENCE TO THE DOCUMENTS THAT ARE REQUIRED BY SECTION 718.503, FLORIDA STATUTES, TO BE FURNISHED BY A DEVELOPER TO A BUYER OR LESSEE. THIS PROJECT IS BEING DEVELOPED BY 1210 BRICKELL OWNER LLC WHICH HAS THE RIGHT TO USE THE TRADEMARK NAMES AND LOGOS OF FORTUNE INTERNATIONAL GROUP. THIS PROJECT IS NOT OWNED, DESIGNED, DEVELOPED, OFFERED OR SOLD BY ORA BY CASA TUA LLC OR ITS AFFILIATES. 1210 BRICKELL OWNER, LLC, THE DEVELOPER OF THE PROJECT OR ITS AFFILIATES USES THE BRAND'S TRADEMARKS PURSUANT TO A LICENSE AGREEMENT WITH THE BRAND, WHICH MAY BE TERMINATED OR REVOKED ACCORDING TO ITS TERMS. THE BRAND HAS NOT CONFIRMED THE ACCURACY OF, AND IS NOT RESPONSIBLE FOR, ANY OF THE STATEMENTS OR REPRESENTATIONS MADE HEREIN. This is not intended to be an offer to sell, or solicitation to buy, condominium units to residents of any jurisdiction where prohibited by law, and your eligibility for purchase will depend upon your state of residency. The offering is made only by the prospectus for the condominium and no statement should be relied upon if not made in the prospectus. All depictions of appliances, counters, soffits, floor coverings, accessories, furniture, fixtures, and all other items of decoration are strictly for illustrative and display purposes only and is intended to act as an example to assist purchasers in visualizing a fully furnished unit. Such depictions should not be relied upon as a representation of the final product. All such items will not be included with the unit unless otherwise provided for in the purchase and sale documents and are subject to changes or substitution without notice. Stated interior square footage is measured to the exterior face of exterior walls and to the centerline of interior demising walls or to the exterior face of walls adjoining corridors or other common elements or shared facilities without excluding areas that may be occupied by columns or other structural components. This method of measurement varies from, and is larger than, the dimensions that would be determined by using the description and the definition of the Unit set forth in the Declaration (which generally only includes the interior airspace between the perimeter walls and excludes structural components). For reference, the area of the unit, determined in accordance with the unit boundaries set forth in the Declaration is set forth in Exhibit "3" to the Declaration. All dimensions are approximate and may vary with actual construction. THE COMPLETE OFFERING TERMS ARE IN A CPS-12 APPLICATION AVAILABLE FROM THE OFFEROR. FILE NO. CP24-0079